

# Reno/Virginia Peak (KRGX) Dome Failure

19 December 2008  
Approx. 1030 UTC

National Weather Service  
Reno, NV

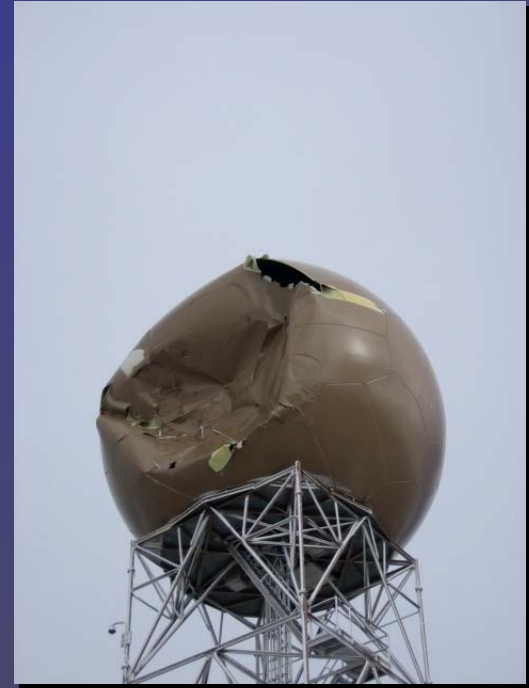
# Photos

Photos taken by NWS Reno electronics team, on first visit to radar after dome failure (19 Dec.).



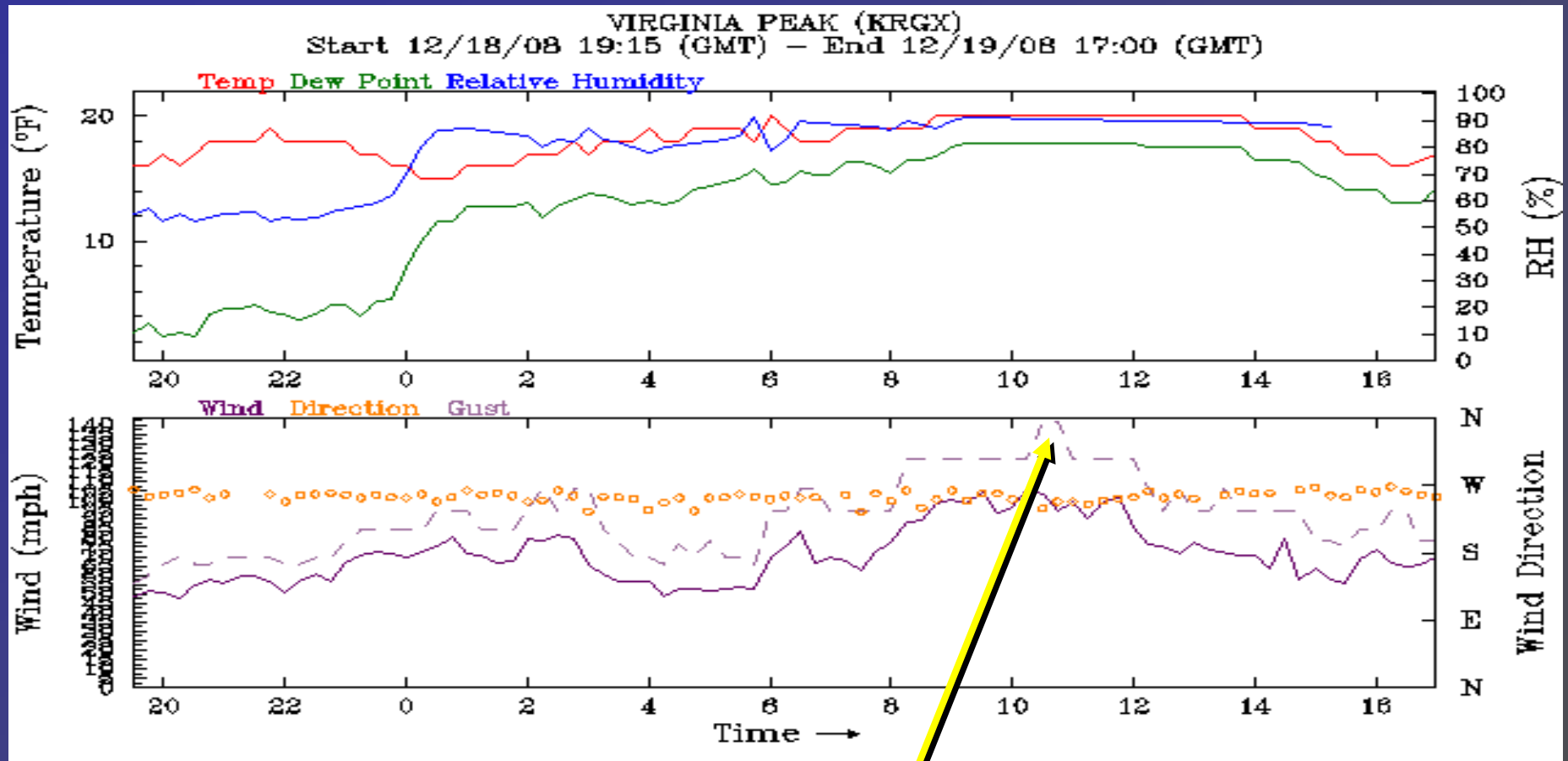
# Photos

Photos taken by NWS Reno electronics team, on first visit to radar after dome failure (19 Dec.).



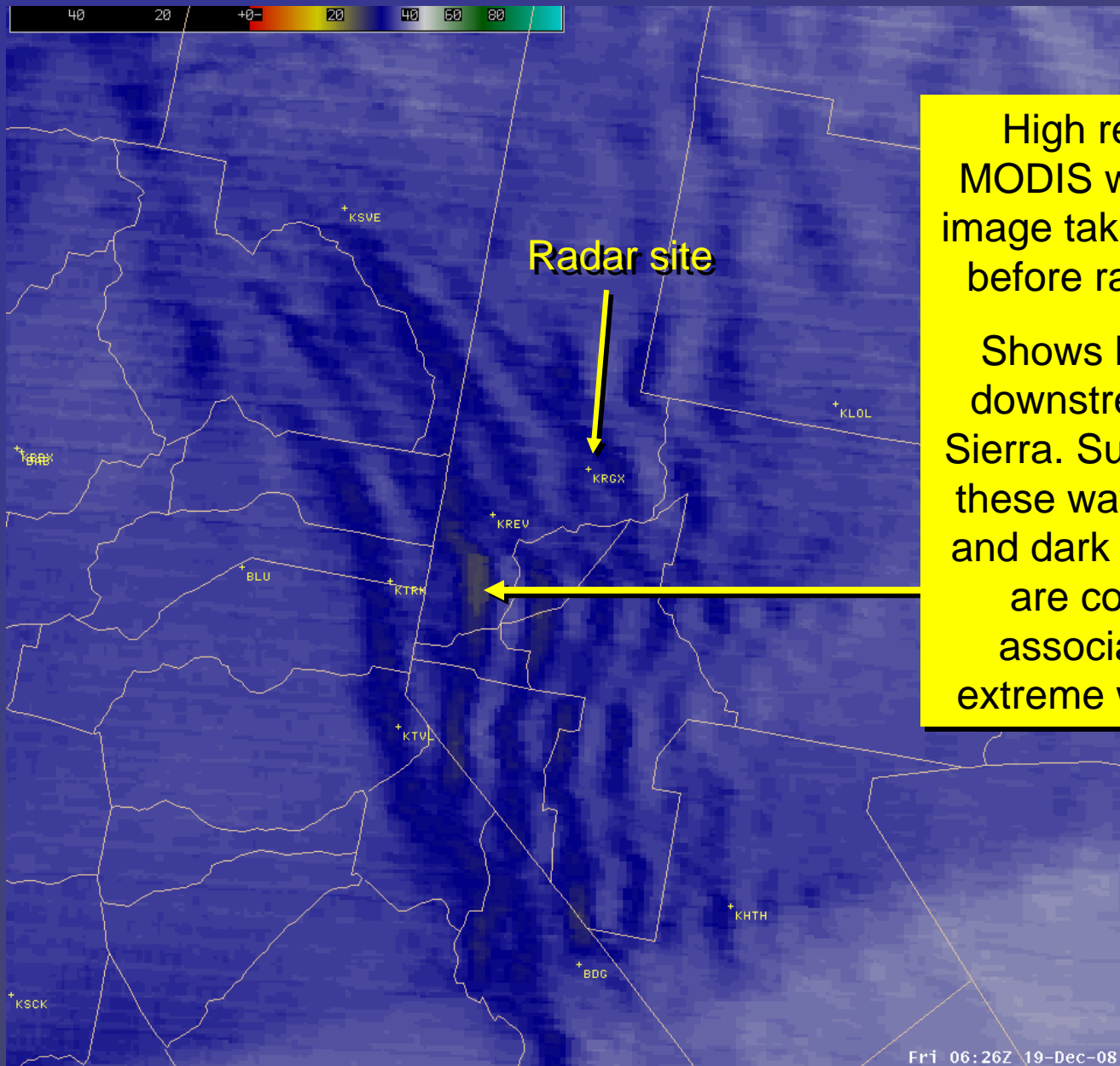
# Virginia Peak Weather Data

Elevation: 8299 ft MSL



140 mph peak gust occurred at the same time the radar failed.

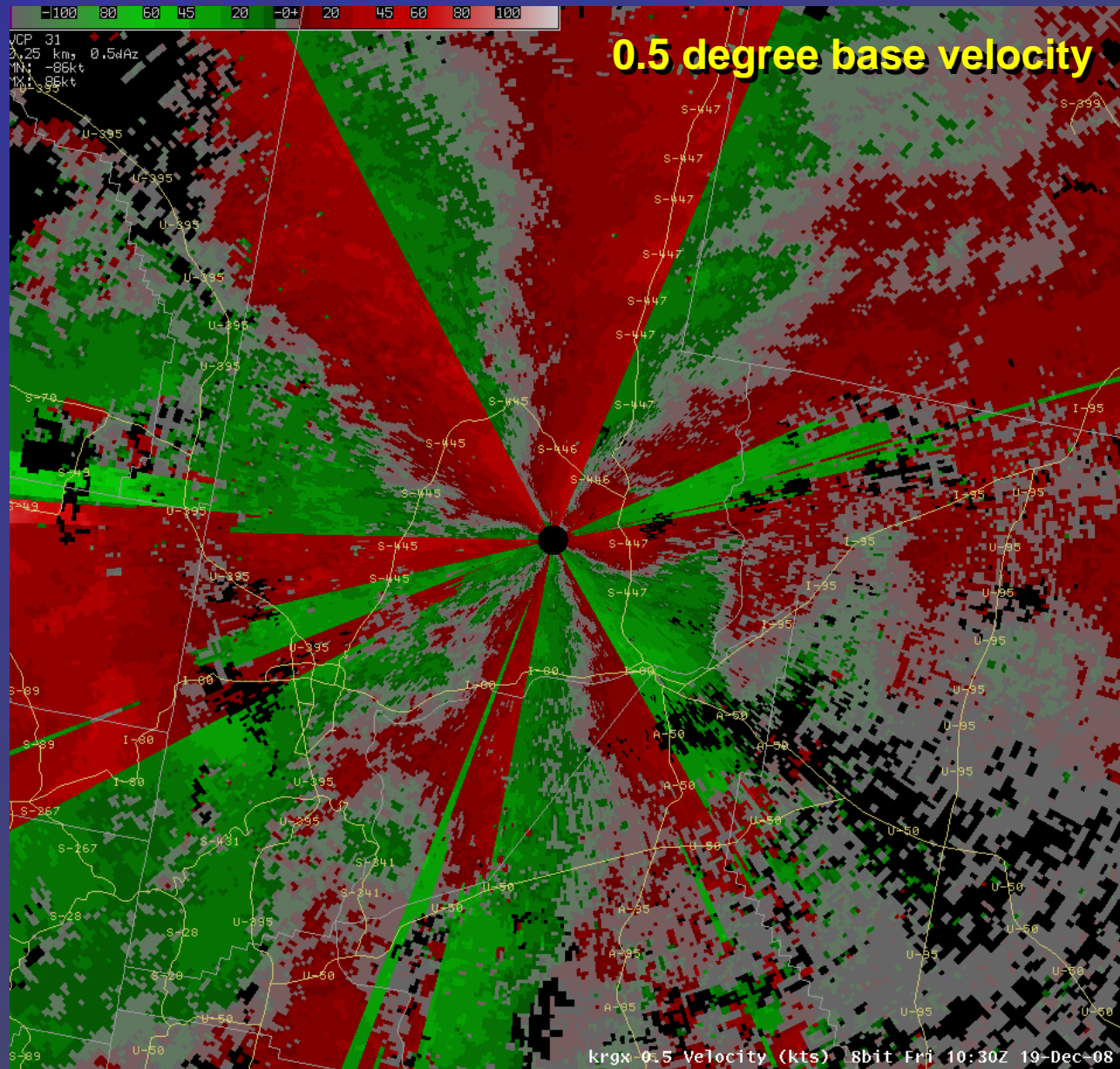
# Lee Waves



High resolution MODIS water vapor image taken ~4 hours before radar failed.

Shows lee waves downstream of the Sierra. Subsidence in these waves (yellow and dark blue areas) are commonly associated with extreme wind gusts.

# Last Radar Image



# When Without Radar...

**NWS Meteorologists make use of an extensive set of alternative data:**

- Surrounding NWS office's radar (e.g. Sacramento, Vegas, Elko, Medford, Hanford)
- Satellite and lightning data
- Surface observations
- Spotters and cooperative observers
- Webcams